

OCEAN CONTAINER SPECIFICATIONS

INTRODUCTION

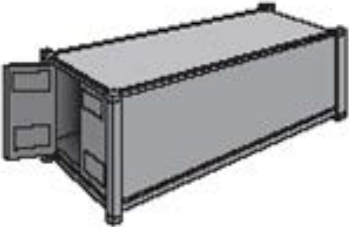
The following dimensions and weights are offered as average indicators. Exact dimensions may vary due to manufacturer of equipment. Maximum capacity weights listed do not correspond to the permissible weight limits for port, road and rail transport in all locations. Loaded containers rarely weigh more than 50,000 lbs. Please [contact us](#) for all details specific to your needs.

Dry Containers:

Suitable for normal cargos. Fitted with bar systems for Garment on Hanger (GOH) in some inventories/trade lanes.

20' Standard

Interior Dimensions			Door Openings		Maximum Capacity		Tare Weight
Length	Width	Height	Width	Height	Volume	Weight	
19'4"	7'8"	7'10"	7'8"	7'6"	1,172 CFT	47,900 LBS	4,916 LBS
5.90 M	2.35 M	2.39 M	2.24 M	2.28 M	33.2 CU. M	21,700 KGS	2,230 KGS



40' Standard

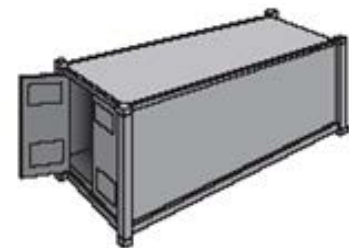
Interior Dimensions			Door Openings		Maximum Capacity		Tare Weight
Length	Width	Height	Width	Height	Volume	Weight	
39'5"	7'8"	7'10"	7'8"	7'6"	2,390 CFT	59,040 LBS	8,160 LBS
12.04 M	2.35 M	2.39 M	2.34 M	2.28 M	67.7 CU. M	26,780 KGS	3,700 KGS

High Cube Dry Containers:

Specifically for light, voluminous or over-height cargo.

40' High Cube

Interior Dimensions			Door Openings		Maximum Capacity		Tare Weight
Length	Width	Height	Width	Height	Volume	Weight	
39'5"	7'8"	8'10"	7'8"	8'5"	2,694 CFT	58,450 LBS	8,750 LBS
12.04 M	2.35 M	2.70 M	2.34 M	2.59 M	76.3 CU. M	26,510 KGS	3,970 KGS



45' High Cube

Interior Dimensions			Door Openings		Maximum Capacity		Tare Weight
Length	Width	Height	Width	Height	Volume	Weight	
44'6"	7'8"	8'10"	7'8"	8'5"	3,050 CFT	64,250 LBS	8,550 LBS
13.56 M	2.35 M	2.70 M	2.34 M	2.59 M	86.4 CU. M	29,140 KGS	3,880 KGS

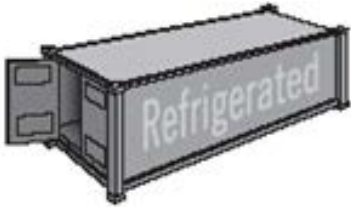
Reefer Containers:

Specifically for cargo requiring transport at a constant temperature above or below a freezing point.

20' Reefer

Interior Dimensions			Door Openings		Maximum Capacity		Tare Weight
Length	Width	Height	Width	Height	Volume	Weight	
17'8"	7'5"	7'5"	7'5"	7'3"	2,694 CFT	58,450 LBS	7,040 LBS
5.43 M	2.28 M	2.26 M	2.26 M	2.22 M	28.3 CU. M	20,800 KGS	3,200 KGS

40' Reefer



Interior Dimensions			Door Openings		Maximum Capacity		Tare Weight
Length	Width	Height	Width	Height	Volume	Weight	
37'8"	7'5"	7'2"	7'5"	7'0"	2,040 CFT	56,276 LBS	10,780 LBS
11.50 M	2.27 M	2.20 M	2.28 M	2.20 M	57.8 CU. M	25,580 KGS	4,900 KGS

40' Reefer High Cube

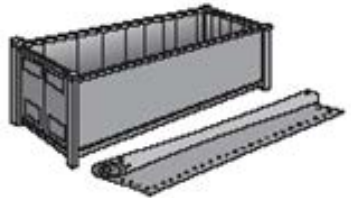
Interior Dimensions			Door Openings		Maximum Capacity		Tare Weight
Length	Width	Height	Width	Height	Volume	Weight	
37'11"	7'6"	8'2"	7'6"	8'0"	2,344 CFT	57,561 LBS	9,900 LBS
11.58 M	2.30 M	2.50 M	2.30 M	2.44 M	66.6 CU. M	25,980 KGS	4,500 KGS

Open Top Containers:

Has a removable tarpaulin. Specifically designed for over-height cargo, allows for loading by crane.

20' Open Top

Interior Dimensions			Door Openings		Maximum Capacity		Tare Weight
Length	Width	Height	Width	Height	Volume	Weight	
19'4"	7'7"	7'8"	7'6"	7'2"	1,136 CFT	47,620 LBS	5,280 LBS
5.90 M	2.31 M	2.35 M	2.29 M	2.19 M	32.2 CU. M	21,600 KGS	2,400 KGS



40' Open Top

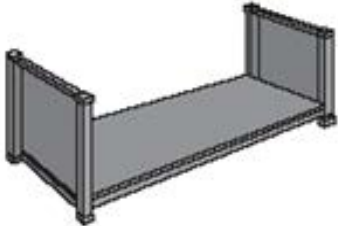
Interior Dimensions			Door Openings		Maximum Capacity		Tare Weight
Length	Width	Height	Width	Height	Volume	Weight	
39'5"	7'8"	7'8"	7'8"	7'5"	2,350 CFT	58,710 LBS	8,490 LBS
12.03 M	2.35 M	2.35 M	2.34 M	2.27 M	67.5 CU. M	26,630 KGS	3,850 KGS

Flat Rack and Platform Containers:

Specifically for heavy loads & over-width cargo, ideal for out of gauge cargo that will not fit inside a closed container.

20' Flat Rack

Interior Dimensions			Door Openings		Maximum Capacity		Tare Weight
Length	Width	Height	Width	Height	Volume	Weight	
18'5"	7'3"	7'4"	-	-	-	47,333 LBS	5,578 LBS
5.62 M	2.20 M	2.23 M	-	-	-	21,470 KGS	2,530 KGS

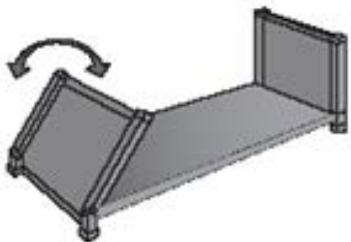


40' Flat Rack

Interior Dimensions			Door Openings		Maximum Capacity		Tare Weight
Length	Width	Height	Width	Height	Volume	Weight	
39'7"	6'10"	6'5"	-	-	-	85,800 LBS	12,081 LBS
12.08 M	2.44 M	2.10 M	-	-	-	39,000 KGS	5,480 KGS

20' Collapsible Flat Rack

Interior Dimensions			Door Openings		Maximum Capacity		Tare Weight
Length	Width	Height	Width	Height	Volume	Weight	
18'6"	7'3"	7'4"	-	-	-	61,117 LBS	6,061 LBS
5.62 M	2.21 M	2.23 M	-	-	-	27,730 KGS	2,750 KGS

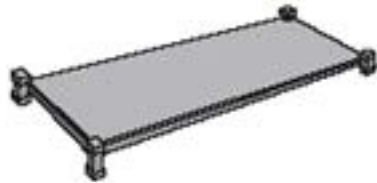


40' Collapsible Flat Rack

Interior Dimensions			Door Openings		Maximum Capacity		Tare Weight
Length	Width	Height	Width	Height	Volume	Weight	
39'7"	6'10"	6'5"	-	-	-	85,800 LBS	12,787 LBS
12.08 M	2.13 M	2.04 M	-	-	-	39,000 KGS	5,800 KGS

20' Platform

Interior Dimensions			Door Openings		Maximum Capacity		Tare Weight
Length	Width	Height	Width	Height	Volume	Weight	
19'11"	8'0"	7'4"	-	-	-	52,896 LBS	6,061 LBS
6.06 M	2.44 M	2.23 M	-	-	-	24,000 KGS	2,750 KGS



40' Platform

Interior Dimensions			Door Openings		Maximum Capacity		Tare Weight
Length	Width	Height	Width	Height	Volume	Weight	
40'0"	8'0"	6'5"	-	-	-	86,397 LBS	12,783 LBS
12.18 M	2.40 M	1.95 M	-	-	-	39,200 KGS	5,800 KGS

ABOUT SHAPIRO

Shapiro, a third generation family-owned business founded in 1915, provides creative and flexible logistics services. With six offices, over 100 employees, and worldwide strategic alliances, Shapiro is the supply chain partner that delivers customized, compliant, and reliable solutions to address your specific import and export needs. Only Shapiro has an experienced and personable staff that truly cares about your company and commits themselves to proactively achieving your business goals.